

UNLESS SPECIFICALLY STATED BY WRITTEN AGREEMENT, THIS DRAWING IS THE SOLE PROPERTY OF GZA GEONVIRONMENTAL, INC. (GZA). THE INFORMATION SHOWN ON THE DRAWING IS SOLELY FOR THE USE BY GZA'S CLIENT OR THE CLIENT'S DESIGNATED REPRESENTATIVE FOR THE SPECIFIC PROJECT AND LOCATION IDENTIFIED ON THE DRAWING. THE DRAWING SHALL NOT BE TRANSFERRED, REUSED, COPIED, OR ALTERED IN ANY MANNER FOR USE AT ANY OTHER LOCATION OR FOR ANY OTHER PURPOSE WITHOUT THE PRIOR WRITTEN CONSENT OF GZA. ANY TRANSFER, REUSE, OR MODIFICATION TO THE DRAWING BY THE CLIENT OR OTHERS, WITHOUT THE PRIOR WRITTEN EXPRESS CONSENT OF GZA, WILL BE AT THE USER'S SOLE RISK AND WITHOUT ANY RISK OR LIABILITY TO GZA.

**L163 TRANSMISSION LINE
KEENE, SULLIVAN, AND STODDARD
NEW HAMPSHIRE**

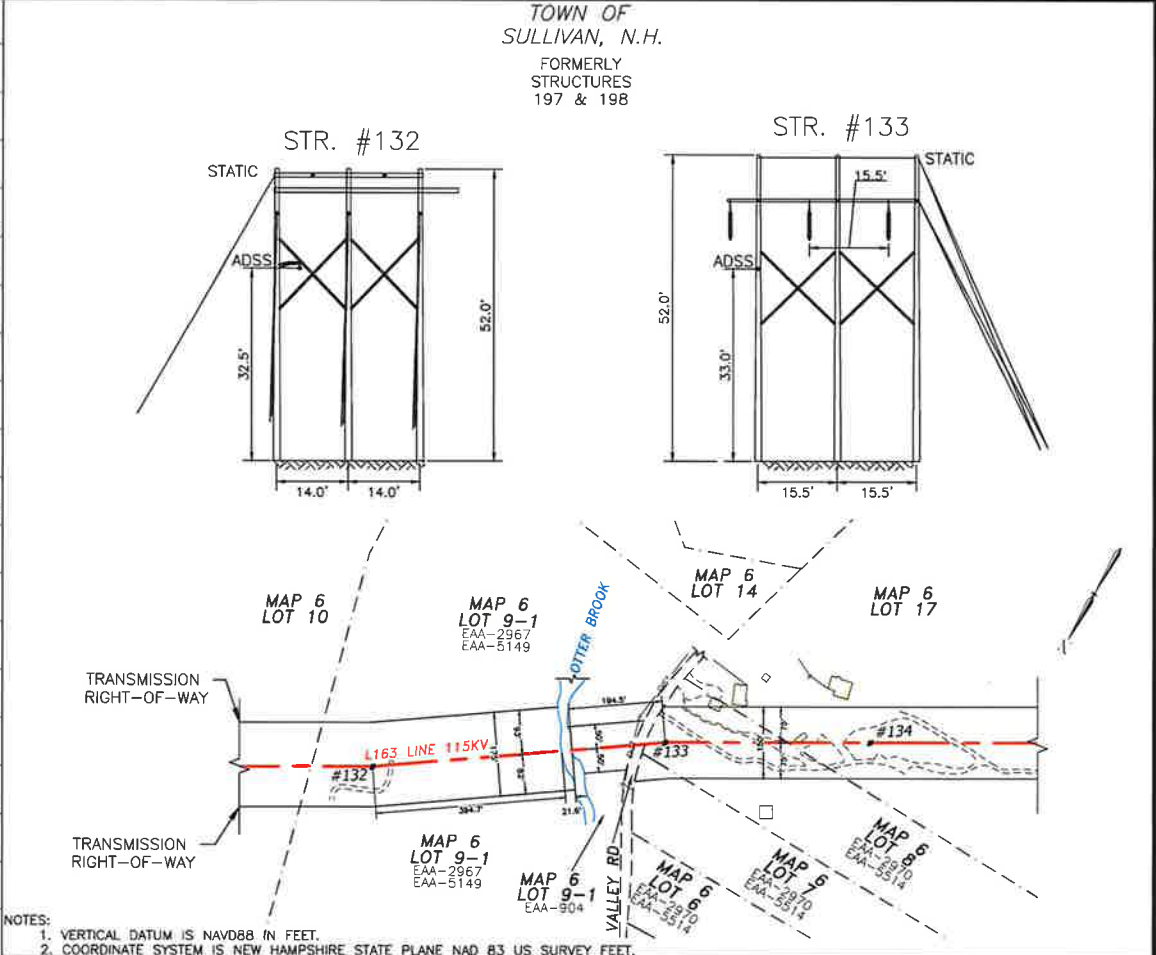
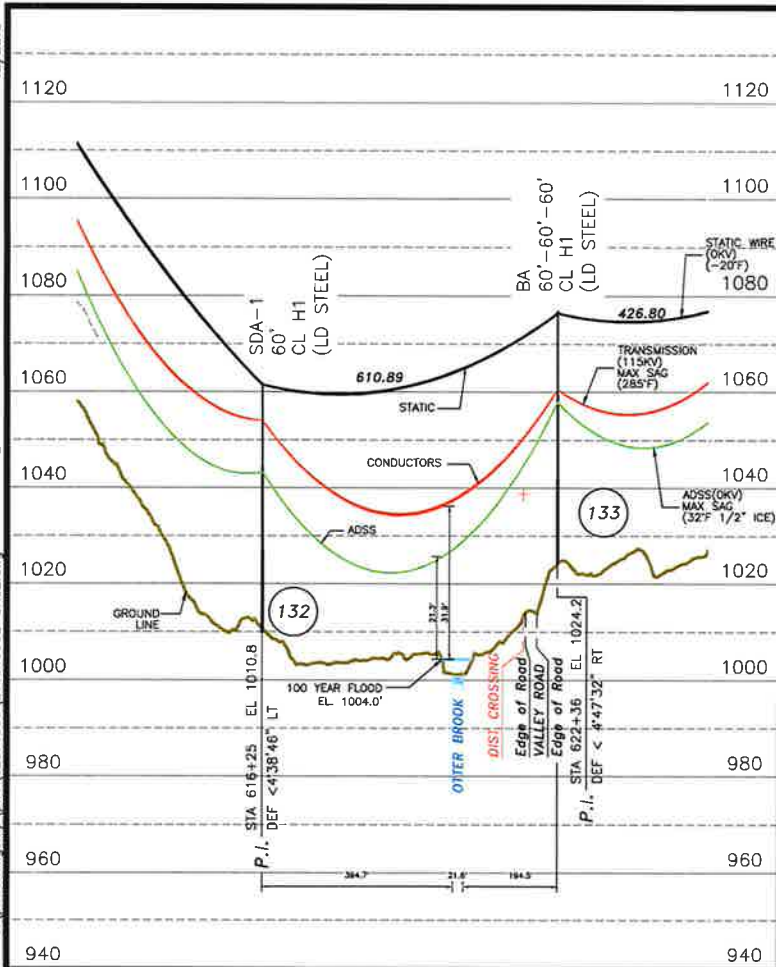
**OTTER BROOK, ASHUELOT RIVER, AND
THE NORTH BRANCH RIVER CROSSINGS
EXHIBIT #1**

PREPARED BY: GZA GeoEnvironmental, Inc. Engineers and Scientists www.gza.com		PREPARED FOR: EVERSOURCE ENERGY	
PROJ MGR: TLT	REVIEWED BY: DMZ	CHECKED BY: TLT	FIG 1
DESIGNED BY: MJD	DRAWN BY: MJD	SCALE: 1" = 6,250 FEET	
DATE: 06/25/2019	PROJECT NO. 04.0190923.05	REVISION NO.	

ES VER: 12/2016

C:\pwworking\temp\pw1\d2576959\L16343902-SH02.dwg - L163-SH02

10/11/2019 1:19 PM - jdoody



NOTES:
 1. VERTICAL DATUM IS NAVD88 IN FEET.
 2. COORDINATE SYSTEM IS NEW HAMPSHIRE STATE PLANE NAD 83 US SURVEY FEET.

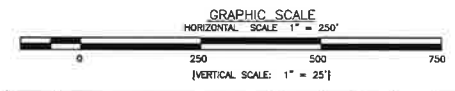
STRUCTURE LOCATION:
 STR. #132 - LAT. = 43°0'9.637"N
 LONG. = 72°11'19.724"W
 STR. #133 - LAT. = 43°0'9.637"N
 LONG. = 72°11'26.566"W

CABLE SCHEDULE:

WIRE	# OF CABLES	TYPE	DIA. (IN.)	WEIGHT/1000 FT	CABLE STRENGTH (LBS.)
STATIC	2	3#6 COPPERWELD	0.349	178	10,280
TRANSMISSION COND.	3	336.4 KCM 26/7 ACSR LINNET	0.720	462	14,100
ADSS	1	ADSS 72 FIBER	0.643	167	4,023

PROFILE LEGEND:

--- (Black)	STATIC WIRE	--- (Red)	115KV CLEARANCE LINE
--- (Red)	TRANSMISSION WIRE	--- (Green)	GROUND LINE PROFILE
--- (Green)	ADSS	--- (Blue)	PROPERTY LINE



NO	DESCRIPTION	DATE	BY	CHKD	APPD
3	RE-ISSUED FOR USE	10/15/18	JVD	SAL	GEL
2	RE-ISSUED FOR USE	08/20/18	SAL	NEB	GEL
1	RE-ISSUED FOR USE	06/07/18	NEB	SAL	GEL
0	ISSUED FOR USE	03/01/18	NEB	TSW	GEL
A	ISSUED FOR REVIEW	11/07/18	NEB	TSW	GEL

EVERSOURCE ENERGY

LINE L163 115KV TRANSMISSION
 OTTER BROOK CROSSING
 SULLIVAN, NH
 EXHIBIT #2

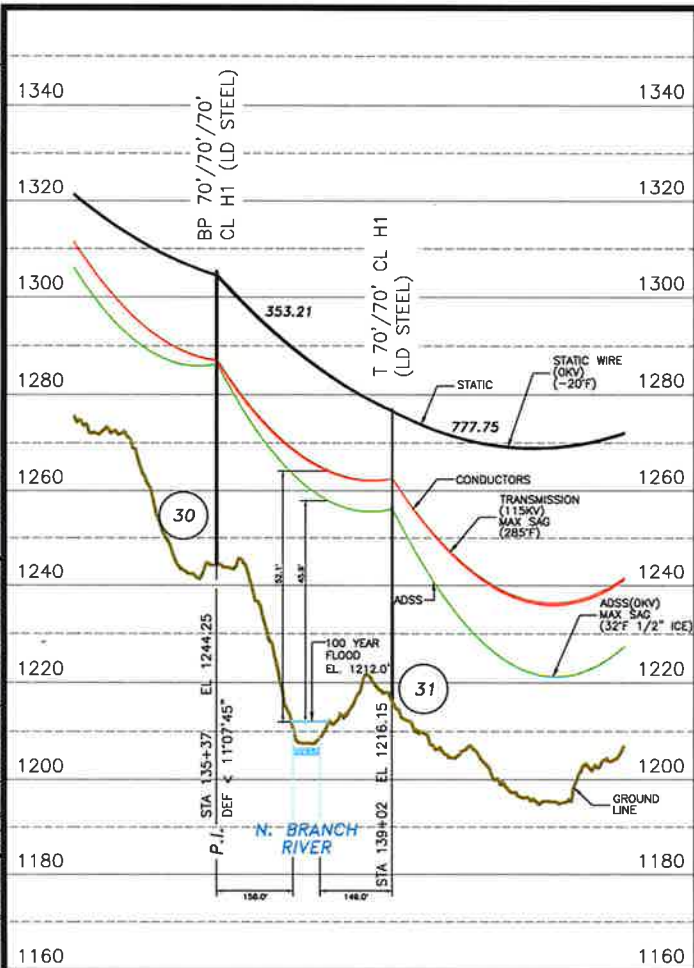
SCALE AS SHOWN
 FILE L16343902-SH02.DWG
 SHEET NO. L16343902-SH02

T	3
DRAWN	NEB/TRC
ENGINEER	GEL/TRC
CHECKED	TSW/TRC
APPROVED	GEL/TRC
DATE	11/27/18

ES VER: 12/2016

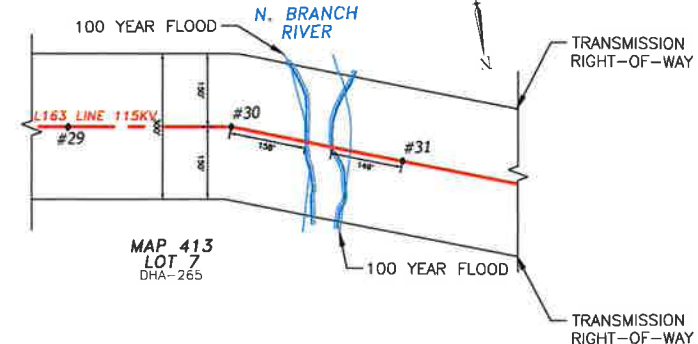
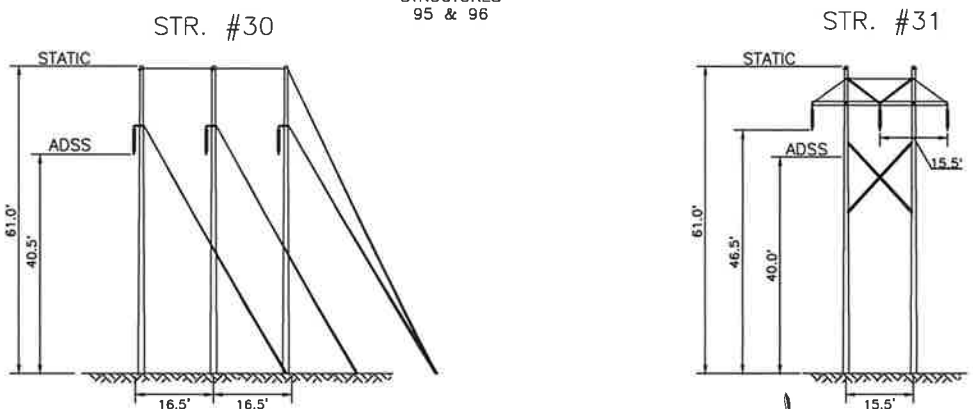
C:\pwworking\pwworking\dwg\2576959\L16343902-SH03.dwg - L163-SH03

10/11/2019 1:18 PM - jdoody



- NOTES:
 1. COORDINATE SYSTEM IS NEW HAMPSHIRE STATE PLANE NAD 83 US SURVEY FEET.
 2. VERTICAL DATUM IS NAVD88 IN FEET.
 3. NO FEMA FLOOD MAP.

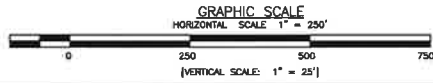
TOWN OF STODDARD, N.H.
 FORMERLY STRUCTURES 95 & 96



STRUCTURE LOCATION:
 STR. #30 - LAT. = 43°3'54.666"N
 LONG. = 72°3'3.971"W
 STR. #31 - LAT. = 43°3'55.818"N
 LONG. = 72°3'8.462"W

CABLE SCHEDULE:

WIRE	# OF CABLES	TYPE	DIA. (IN.)	WEIGHT/1000 FT	CABLE STRENGTH (LBS.)
STATIC	2	3#6 COPPERWELD	0.349	178	10,280
TRANSMISSION COND.	3	336.4 KCM 26/7 ACSR LINNET	0.720	462	14,100
ADSS	1	ADSS 72 FIBER	0.643	167	4,023



REV	DESCRIPTION	DATE	BY	CHKD	APPD
2	RE-ISSUED FOR USE	10/15/19	JJO	SAL	GEL
1	RE-ISSUED FOR USE	09/29/19	SAL	NEB	GEL
0	ISSUED FOR USE	06/07/19	NEB	SAL	GEL
A	ISSUED FOR REVIEW	03/21/19	NEB	TRV	GEL

EVERSOURCE ENERGY

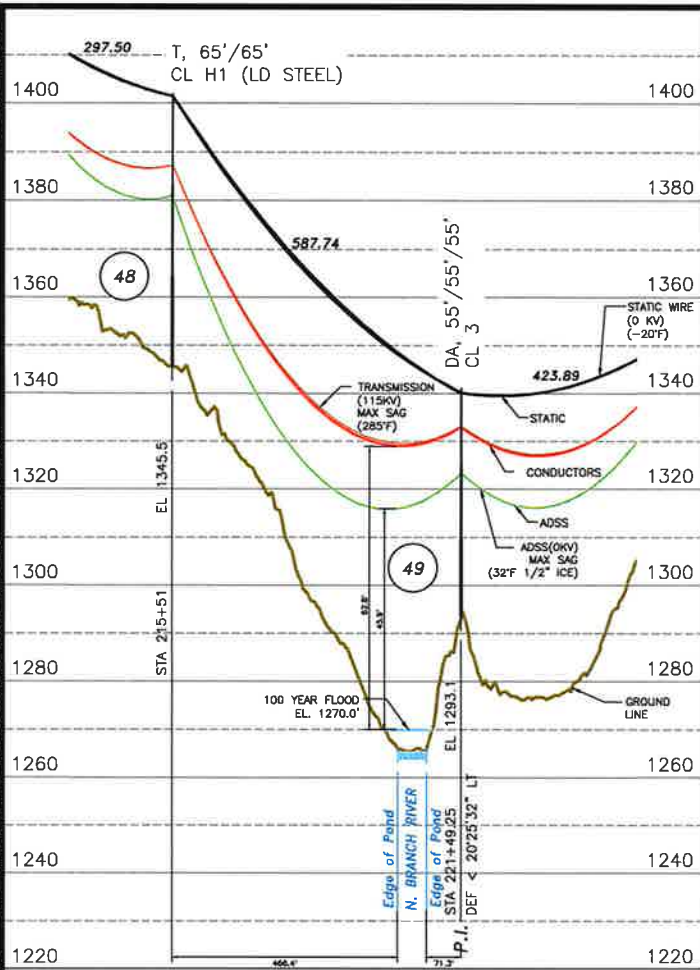
LINE L163 115KV TRANSMISSION
 N. BRANCH RIVER WATER CROSSING
 STODDARD, NH
 EXHIBIT #3

DATE: 12/26/18

SCALE: AS SHOWN
 FILE: L16343902-SH03.DWG
 DRAWING NO.: L16343902-SH03

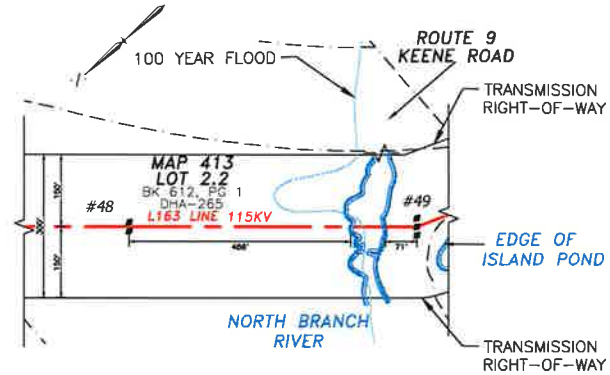
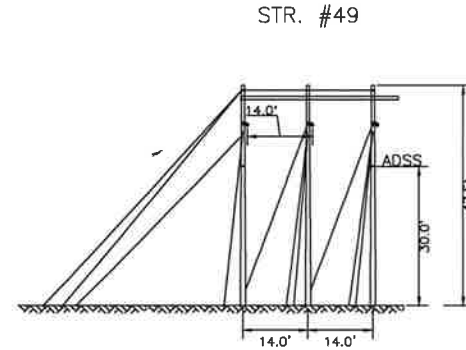
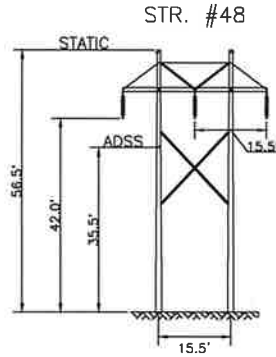
ES VER: 12/2016

10/14/2019 4:22 PM - Slessard - C:\pwworking\pwr1\d2576959\L16343902-SH04.dwg - L163-SH04



NOTES:
 1. VERTICAL DATUM IS NAVD88 IN FEET.
 2. COORDINATE SYSTEM IS NEW HAMPSHIRE STATE PLANE NAD 83 US SURVEY FEET.

TOWN OF
 STODDARD, N.H.
 FORMERLY
 STRUCTURES
 113 & 114



STRUCTURE LOCATION:

STR. #48 - LAT. = 43°3'39.41"N
 LONG. = 72°4'30.831"W
 STR. #49 - LAT. = 43°3'35.001"N
 LONG. = 72°4'35.982"W

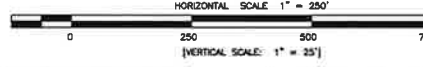
CABLE SCHEDULE:

WIRE	# OF CABLES	TYPE	DIA. (IN.)	WEIGHT/1000 FT	CABLE STRENGTH (LBS.)
STATIC	2	3#6 COPPERWELD	0.349	178	10,280
TRANSMISSION COND.	3	336.4 KCM 26/7 ACSR LINNET	0.720	462	14,100
ADSS	1	ADSS 72 FIBER	0.643	167	4,023

PROFILE LEGEND:

—	STATIC WIRE	—	115KV CLEARANCE LINE
—	TRANSMISSION WIRE	—	GROUND LINE PROFILE
—	ADSS	—	PROPERTY LINE

GRAPHIC SCALE



REV	DATE	BY	CHKD	APPD	DESCRIPTION
2	10/15/18	JUD	SAL	GEL	RE-ISSUED FOR USE
1	09/20/18	SAL	NEB	GEL	RE-ISSUED FOR USE
0	08/07/18	NEB	SAL	GEL	ISSUED FOR USE
A	03/15/18	SAL	JUD	GEL	ISSUED FOR REVIEW

EVERSOURCE ENERGY

LINE L163 115KV TRANSMISSION
 N. BRANCH RIVER CROSSING
 STODDARD, N.H.
 EXHIBIT #4

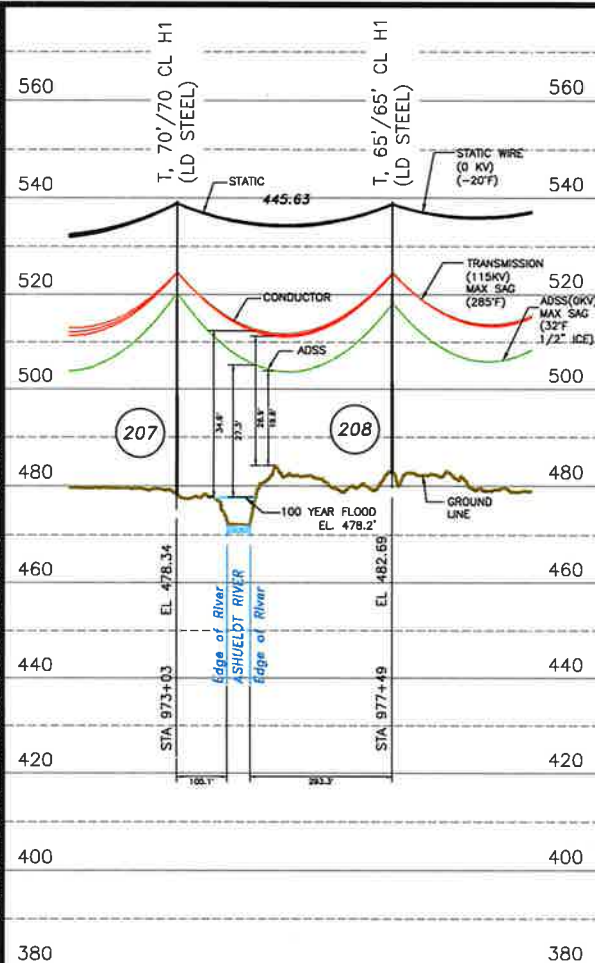
SCALE: AS SHOWN
 FILE: L16343902-SH04.DWG
 DRAWING NO: L16343902-SH04

T	2
DRWN	SAL/TRC
CHKD	GEL/TRC
CHKD	JUD/TRC
APPROV	GEL/TRC
DATE	03/13/19

ES VER: 12/2016

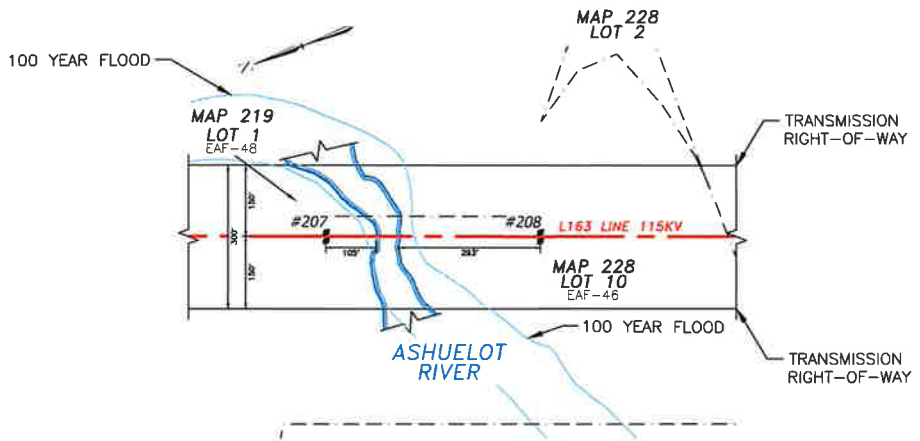
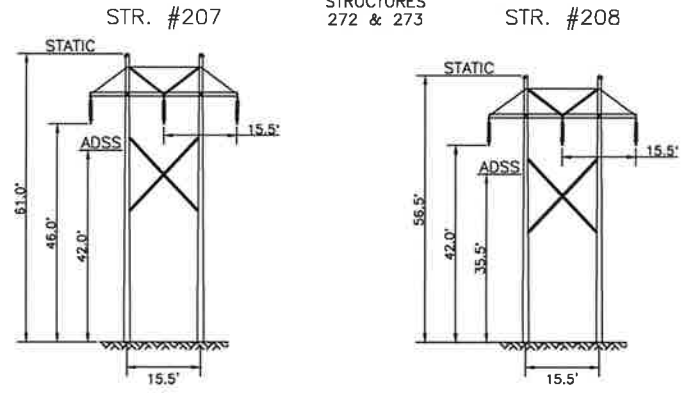
C:\pwworking\pwworking\dwg\16343902-SH05.dwg - L163-SH05

10/14/2019 4:32 PM - Slessord



TOWN OF KEENE, N.H.

FORMERLY STRUCTURES 272 & 273



- NOTES:
 1. VERTICAL DATUM IS NAVD88 IN FEET.
 2. COORDINATE SYSTEM IS NEW HAMPSHIRE STATE PLANE NAD 83 US SURVEY FEET.

STRUCTURE LOCATION:

STR. #207 - LAT. = 42°57'20.853"N
 LONG. = 72°18'7.243"W
 STR. #208 - LAT. = 42°57'16.75"N
 LONG. = 72°18'5.076"W

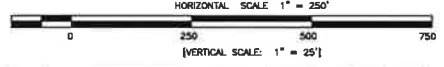
CABLE SCHEDULE:

WIRE	# OF CABLES	TYPE	DIA. (IN.)	WEIGHT/1000 FT	CABLE STRENGTH (LBS.)
STATIC	2	3#6 COPPERWELD	0.349	178	10,280
TRANSMISSION COND.	3	336.4 KCM 26/7 ACSR LINNET	0.720	462	14,100
ADSS	1	ADSS 72 FIBER	0.643	167	4,023

PROFILE LEGEND:



GRAPHIC SCALE



NO.	REV.	DESCRIPTION	DATE	BY	CHKD	APPD
2		RE-ISSUED FOR USE	10/15/18	JJD	SAL	GEL
1		RE-ISSUED FOR USE	08/26/18	SAL	NEB	GEL
0		ISSUED FOR USE	08/01/18	NEB	SAL	GEL
A		ISSUED FOR REVIEW	03/01/18	SAL	JJD	GEL



LINE L163 115KV TRANSMISSION
 ASHUELOT WATER CROSSING
 KEENE, N.H.
 EXHIBIT #5

T	2
DRWN	SAL/TRC
CHKD	GEL/TRC
APPD	JJD/TRC
DATE	02/27/19

SCALE: AS SHOWN
 FILE: L16343902-SH05.DWG
 SHEET: L16343902-SH05