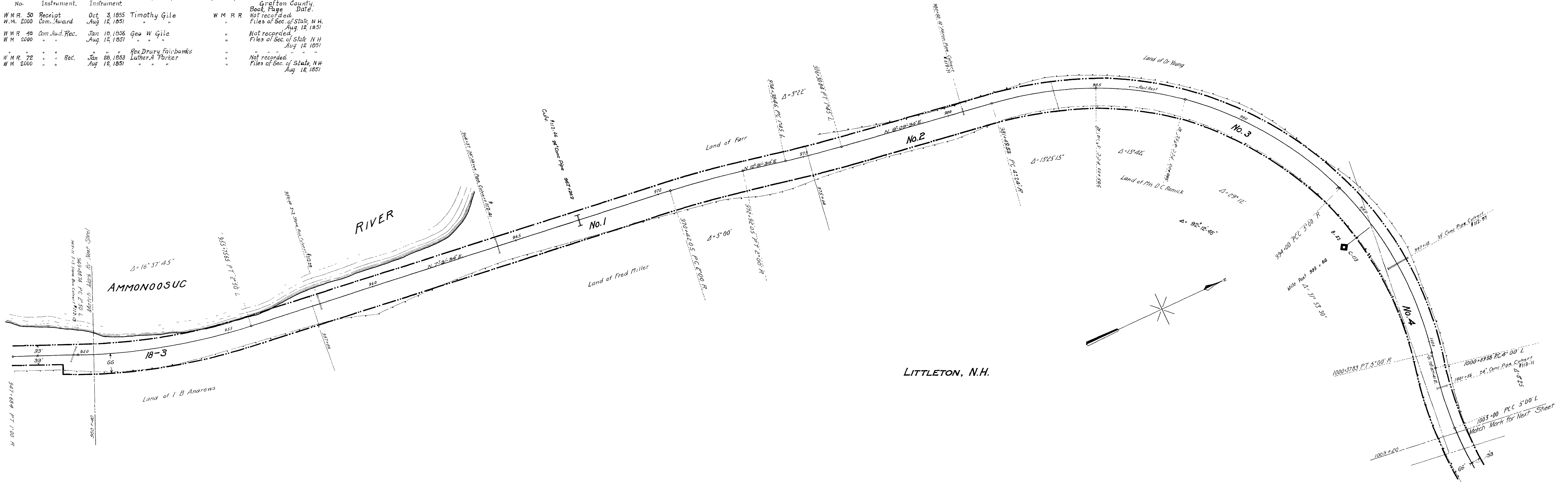


Parcel No.	Custodians No.	Kind of Instrument	Date of Instrument	Grantor	Grantee	Recorded, Grafton County, Book, Page, Date.
1	W.M.R. 50	Receipt	Oct 3, 1855	Timothy Gile	W M R R	Not recorded.
"	W.M. 2000	Com. Award	Aug 12, 1851	" "	"	Files of Sec. of State, N.H. Aug. 12, 1851
2	W.M.R. 18	Com. Award Rec.	Jan 18, 1856	Geo W Gile	"	Not recorded.
"	W.M. 2000	"	Aug 12, 1851	" " "	"	Files of Sec. of State, N.H. Aug 12, 1851
3	"	"	"	Rev. Drury Fairbanks	"	"
4	W.M.R. 72	" Rec.	Jan 28, 1853	Luther A Parker	"	Not recorded.
"	W.M. 2000	"	Aug 12, 1851	" " "	"	Files of Sec. of State, N.H. Aug 12, 1851



LITTLETON, N.H.

REVISED TO	
PHYSICAL FEATURES	LAND LINES
Apr. 1922	
Aug. 1922	
July 1951	

Sheet No. 19 of fifty three sheets of The Concord & Montreal Railroad White Mountains Division, Main Line, from survey station 950+40 to survey station 1003+20.
J.C. Shepherd
 Valuation Engineer.

T. 9-31	General Revision.	Div. Off.
4-15-47	New Br. Numbers	
11-5-46	M.P. 6-113 995 + 66	v.o. 11-4-46
Date	Change	Sketch

RIGHT-OF-WAY AND TRACK MAP
THE CONCORD & MONTREAL R.R.
 Operated by the
BOSTON AND MAINE R.R.
 STATION 950+40 TO STATION 1003+20
 SCALE: 1-IN.=100-FT. JUNE 30, 1914.
 Office of Valuation Engineer,
 Boston, Mass.