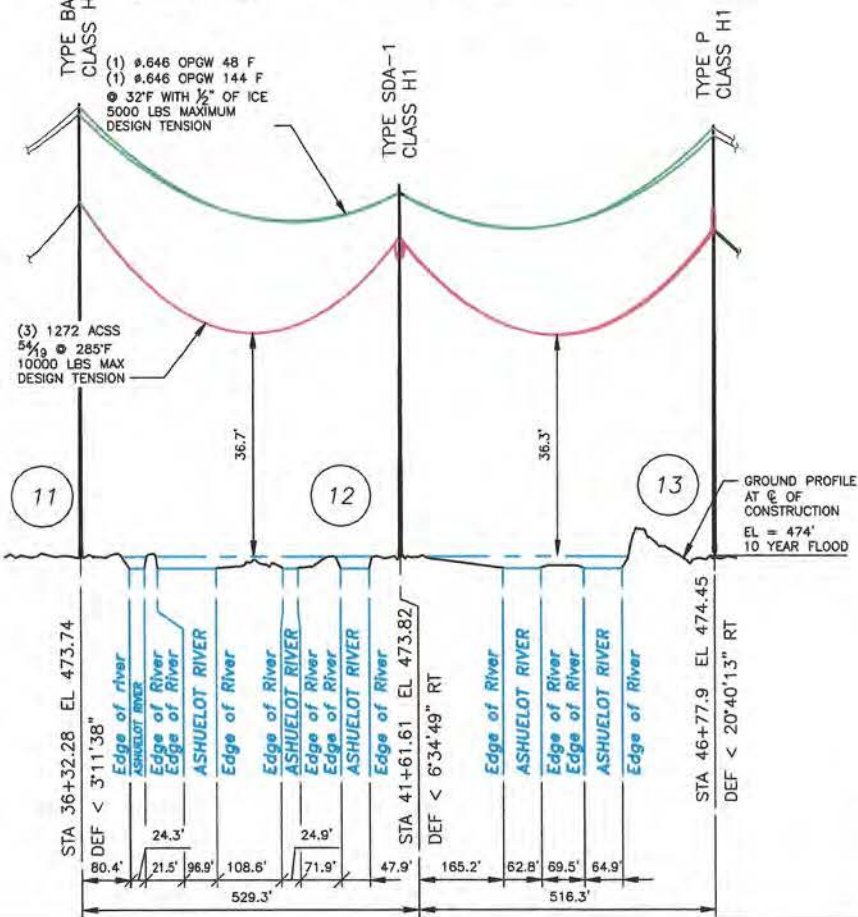
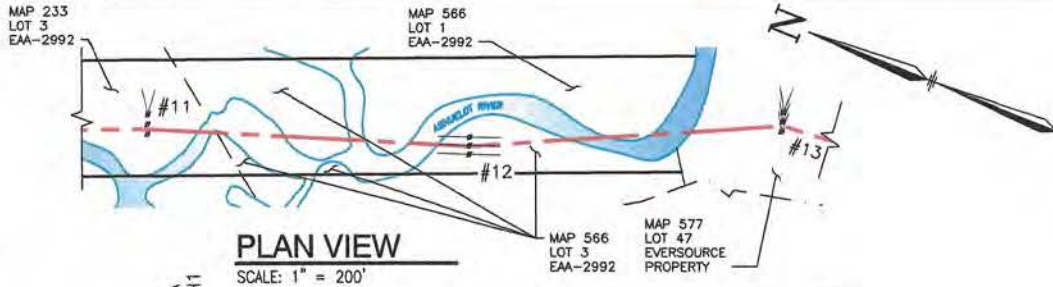


LEGEND:

- D108 LINE:
- D108 STR:

DWG REV	EPN/DESCRIPTION	CONT/PE#	DATE	DRN	CHKD	APPR
1	SUBMITTED TO NH PUC		08/20	GBS	SDR	JRS

<h1 style="margin: 0;">EVERSOURCE ENERGY</h1>		T	1
		DRAWN GBS	ENGINEER JRS
<p>D108 115kV LINE ASHUELOT RIVER, LOCATION PLAN KEENE, NEW HAMPSHIRE EXHIBIT 1</p>		CHECKED SDR	APPROVED JRS
		DATE 06/26/20	
		DRAWING NO. D10843901	
SCALE AS SHOWN	FILE: D10843901.DWG IMAGE:		



CABLE SCHEDULE						
WIRE	QTY OF CABLES	TYPE		REPLACEMENT DATA		
		EXISTING	REPLACEMENT	Ø (in)	WEIGHT (lb/ft)	ULTIMATE TENSION (lb)
CONDUCTOR	3	LINNET / ACSR 336 Kcmil 27	PHEASANT / ACSS 1272 Kcmil 27	1.381	1.634	34100
OPGW	1	3#6 COPPERWELD	OPGW 48F	0.646	0.476	24531
OPGW	1	3#6 COPPERWELD	OPGW 144F	0.6460	0.426	20349

LEGEND:

- STRUCTURE (WITH GUYS)
- #14 PROPERTY BOUNDARY
- D108 LINE 115KV LINE, Ø OF CONSTRUCTION
- LIMITS OF EVERSOURCE RIGHT OF WAY

STRUCTURE LOCATION		
STRUCTURE	LONGITUDE	LATITUDE
11	-72.29175900	42.93687334
12	-72.29110315	42.93550331
13	-72.29025929	42.93422967

NESC VERTICAL CLEARANCE (FT) FROM TABLE 232.1	
NATURE OF SURFACE UNDERNEATH WIRES, CONDUCTORS OR CABLES	115KV
WATER AREAS NOT SUITABLE FOR SAIL BOATING OR WHERE SAIL BOATING IS PROHIBITED	18.6

NOTES:

1. PARCEL INFORMATION PROVIDED BY NH GRANIT.
2. ELEVATIONS REFERENCED TO THE NORTH AMERICAN VERTICAL DATUM OF 1988.
3. PER NESC TABLE 232.1 PART 2, #18, 10 YEAR FLOOD ELEVATION FROM THE FEMA FLOOD INSURANCE STUDY NUMBER 33005CV001A.

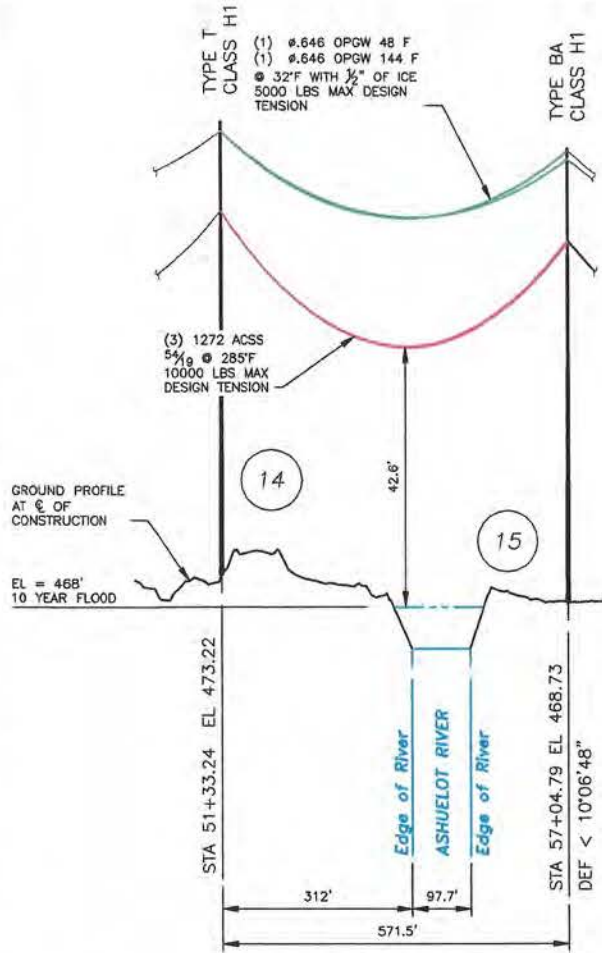
EVERSOURCE ENERGY

D108, 115kV LINE
ASHUELOT RIVER, PUBLIC WATER CROSSING
KEENE, NEW HAMPSHIRE
PLAN AND PROFILE, EXHIBIT 2

DRAWN GBS	T	1
ENGINEER JRS	CHECKED SDR	APPROVED JRS
DATE 06/26/20		DRAWING NO. D10843901

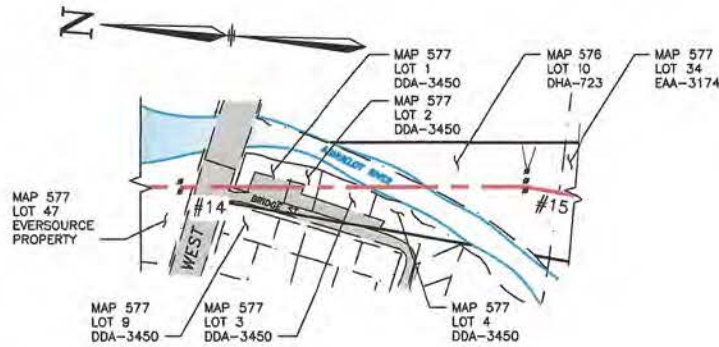
NO	DATE	DESCRIPTION	BY	CHKD	APPD
1	08/20	SUBMITTED TO NH PUC	GBS	SDR	JRS

SCALE AS SHOWN	FILE: D10843901.DWG	DRAWING NO. D10843901
-------------------	---------------------	--------------------------



PROFILE VIEW

SCALE: HORZ 1" = 200'
VERT 1" = 20'



PLAN VIEW

SCALE: 1" = 200'

CABLE SCHEDULE						
WIRE	QTY OF CABLES	TYPE		REPLACEMENT DATA		
		EXISTING	REPLACEMENT	Ø (in)	WEIGHT (lb/ft)	ULTIMATE TENSION (lb)
CONDUCTOR	3	LINNET / ACSR 336 Kcmil 27	PHEASANT / ACSS 1272 Kcmil 27	1.381	1.634	34100
OPGW	1	3#6 COPPERWELD	OPGW 48F	0.646	0.476	24531
OPGW	1	3#6 COPPERWELD	OPGW 144F	0.6460	0.426	20349

LEGEND:

- STRUCTURE (WITH GUYS)
- #15 PROPERTY BOUNDARY
- D108 LINE 115KV** LINE, & OF CONSTRUCTION
- LIMITS OF EVERSOURCE RIGHT OF WAY

STRUCTURE LOCATION		
STRUCTURE	LONGITUDE	LATITUDE
14	-72.29010260	42.93298566
15	-72.28990594	42.93142419

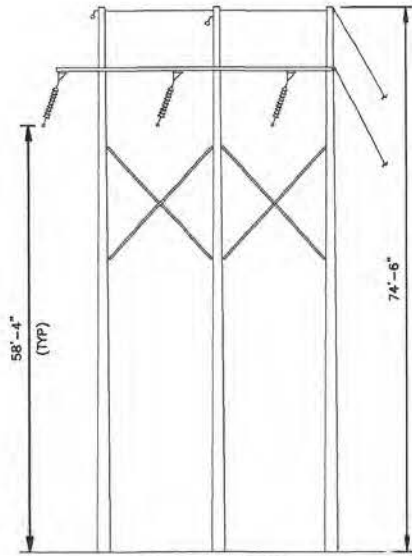
NEC VERTICAL CLEARANCE (FT)	
FROM TABLE 232.1	
NATURE OF SURFACE UNDERNEATH WIRES, CONDUCTORS OR CABLES	115KV
WATER AREAS NOT SUITABLE FOR SAIL BOATING OR WHERE SAIL BOATING IS PROHIBITED	18.6

NOTES:

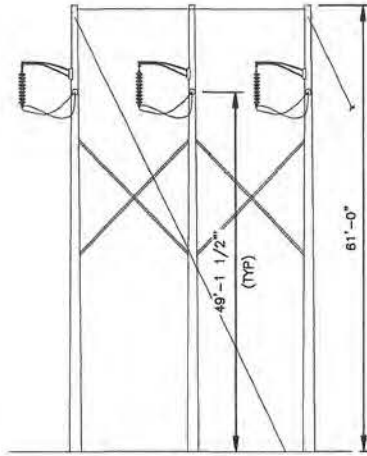
1. PARCEL INFORMATION PROVIDED BY NH GRANIT.
2. ELEVATIONS REFERENCED TO THE NORTH AMERICAN VERTICAL DATUM OF 1988.
3. PER NEC TABLE 232.1 PART 2, #18, 10 YEAR FLOOD ELEVATION FROM THE FEMA FLOOD INSURANCE STUDY NUMBER 33005CV001A.

	D108, 115kV LINE ASHUELOT RIVER, PUBLIC WATER CROSSING KEENE, NEW HAMPSHIRE PLAN AND PROFILE, EXHIBIT 3	T 1
		DRAWN GBS
		ENGINEER JRS
		CHECKED SDR
		APPROVED JRS
		DATE 06/26/20

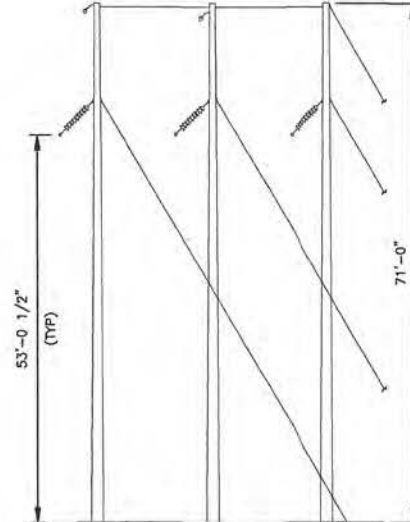
DWG REV	DATE	BY	CHKD	APPD	SCALE	FILE	DRAWING NO.
1	08/20	GBS	SDR	JRS	AS SHOWN	D:\10843901.DWG	D10843901



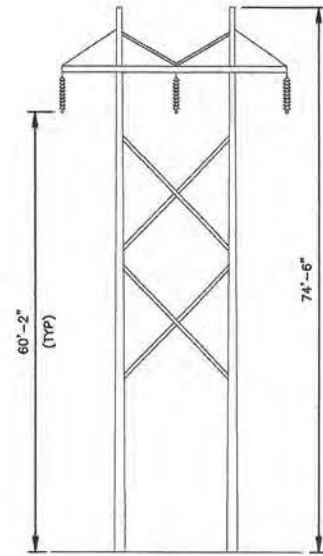
STR 11 AND 15
EVERSOURCE TYPE BA, STEEL THREE POLE, SINGLE
CIRCUIT RUNNING ANGLE, HORIZONTAL CONFIG., GUYED



STR 12
EVERSOURCE TYPE SDA-1, STEEL
THREE POLE, SINGLE CIRCUIT DEAD END
ANGLE, HORIZONTAL CONFIG., GUYED



STR 13
EVERSOURCE TYPE P, STEEL THREE
POLE, SINGLE CIRCUIT RUNNING
ANGLE, HORIZONTAL CONFIG., GUYED



STR 14
EVERSOURCE TYPE T, STEEL TWO
POLE, SINGLE CIRCUIT TANGENT,
HORIZONTAL CONFIG.

DWG REV	DATE	BY	CHKD	APPD
1	05/20	GBS	SDR	JRS

EVERSOURCE ENERGY	T	1
	DESIGN	GBS
	ENGINEER	JRS
	CHECKED	SDR
D108, 115kV LINE ASHUELOT RIVER, PUBLIC WATER CROSSING STRUCTURE DETAILS EXHIBIT 4		APPROVED
		JRS
		DATE
		06/26/20
SCALE AS SHOWN FILE: D10843901.DWG SHEET:		DRAWING NO. D10843901