

THE STATE OF NEW HAMPSHIRE  
DEPARTMENT OF TRANSPORTATION  
AND  
THE CITY OF CONCORD

**CONSTRUCTION PLANS**  
**STATE OF NEW HAMPSHIRE RAILROAD**  
**OPERATED BY NEW ENGLAND SOUTHERN RAILROAD**  
**CONCORD TO LINCOLN LINE**

CONCORD FY1998 CIP PROJECT NO. 44

RAILROAD REALIGNMENT BETWEEN  
ROUTE 393 AND FAN ROAD

STA. 0+00  
BEGIN RAILROAD  
REALIGNMENT

COMMERCIAL STREET

STA. 30+15.10  
RAILROAD REALIGN  
CONTRACT (END  
EARTHWORK & SUB.

STA. 27+10  
RAILROAD REALIGNMENT  
CONTRACT (END  
BALLAST & TRACK)

Recorded at Merrimack County Registry of Deeds  
Plan No. 14736 on 5/18/99



HORSESHOE POND

STA. 30+15.10  
RAILROAD REALIGNMENT  
CONTRACT (END  
EARTHWORK & SUB-BALLAST)

STA. 27+10± - 30+15  
FAN ROAD CROSSING  
SEPARATE CONTRACT

STA. 27+10±  
RAILROAD REALIGNMENT  
CONTRACT (END  
BALLAST & TRACK)

COMMERCIAL STREET

FAN ROAD

PROPOSED 30'  
WIDE CECO  
TRANSMISSION  
EASEMENT

PROPOSED 30'  
WIDE RAILROAD  
RIGHT-OF-WAY  
REALIGNMENT  
61,818 S.F.

INTERSTATE 93 SOUTH BOUND

20' WIDE TEMPORARY  
CONSTRUCTION EASEMENT

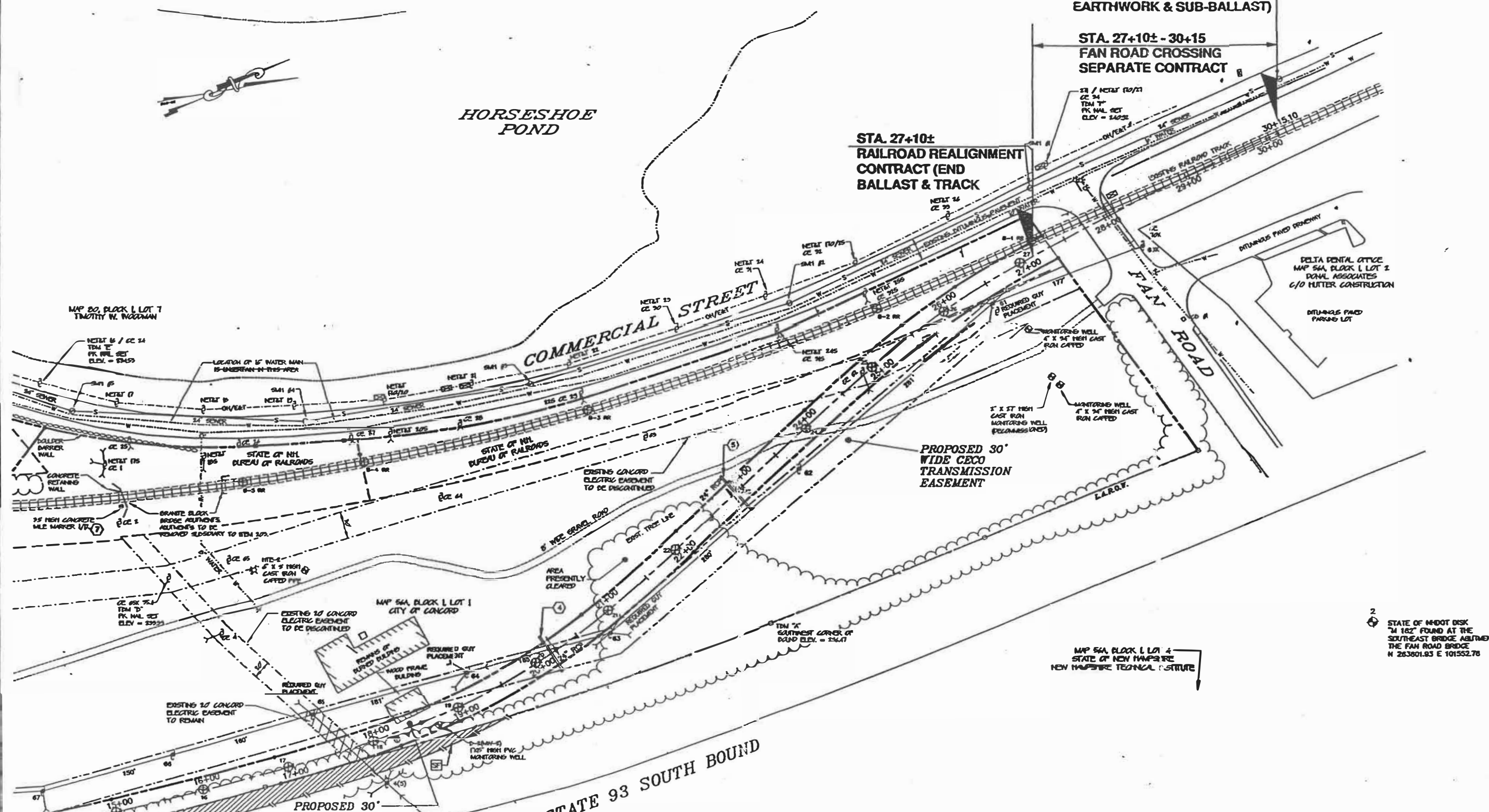
- ④ STA. 20+16, LT. 21.6'-20+16, RT. 25.5'  
CONSTRUCT 47' x 24" R.C.P., 40000  
IN. IN 231.40  
IN. OUT 231.20
- ⑤ STA. 22+90, LT. 24.5'-22+90, RT. 22.5'  
CONSTRUCT 47' x 24" R.C.P., 40000  
IN. IN 231.00  
IN. OUT 230.76
- ⑦ MARKER TO BE REMOVED, STORED AND  
REINSTALLED AT A LOCATION TO BE  
DETERMINED

STATE OF NEW HAMPSHIRE  
DEPARTMENT OF TRANSPORTATION BUREAU OF RAIL & TRANSIT

GENERAL PLAN

S.E. PROJ. NO.	CAD FILE NAME	CITY PROJECT NO.	STATE PROJECT NO.	SHEET NO.	TOTAL SHEETS
307	GENPLAN.DWG	FY1996 CP NO. 44		6	22

IN. CT. DATE: 4/26/99  
 CHECKED BY: MAV, RBB



2  
STATE OF NH DOT DISK  
"M 182" FOUND AT THE  
SOUTHEAST BRIDGE ABUTMENT OF  
THE FAN ROAD BRIDGE  
N 283801.83 E 101552.78